



# IP Based Lecturer Tracking and Board Writing Detecting System/LTC-A2001NV2 + BLS-200



## LTC-A2001NV2

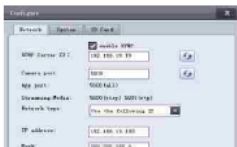


This smart lecturer tracking and board writing detection system consists of an IP HD lecturer tracking camera and an IP board writing detecting camera(POE supported), configuration and installation of the system has never been so easy and effective, unique performance of the system is that, after the board writing detecting camera detects writing actions on the board, it triggers the lecturer tracking camera to automatically move to the pre-defined board position and start tracking lecturer there. If undetected, the lecturer tracking camera can either keep tracking lecturer or return to a pre-defined position and start tracking there.



### Board writing triggers tracking

When board writing detecting sensor detects writing actions, it triggers the lecturer tracking camera to automatically move to pre-defined board position and start tracking lecturer there. If undetected, tracking camera can either stay or return to pre-defined position.



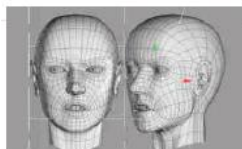
### IP Capability

Both the lecturer tracking camera and board writing detecting camera support IP control and preview, detecting camera also supports POE. Free configuration software is provided together with device.



### Unmanned and standalone tracking

Tracking performance is realized by the system itself, both its two lens manage the tracking algorithm, there is no need to have manual operation or have extra devices / sensors to assist tracking



### Precise lock and track capability

Tracking is based on both face detection and motion detection technology, which ensures smooth and precise lock & track performance even in comprehensive scenarios



### No " Fish-eye" at full view lens.

The small full view lens of the tracking system addressed geometric distortion problem, it can be used as a standard image to shot lecturer area.

## Technical Specification

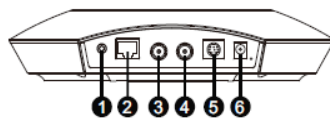
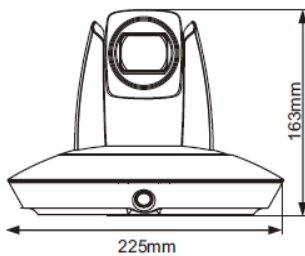
<b>Model No.</b>	<b>LTC-A2001NV2</b>
<b>Tracking Camera</b>	
Image Sensor	1/2.8" Exmor CMOS, 2.14MP
Lens	f =4.7mm -94.0mm;F1.6 - F3.5
Zoom	Optical: 20X, Digital: 12X
Field of View	59.5° - 2.9°
Focus	Auto, Manual, One push
Min.Illumination	0.5
Shutter Speed	1/1 - 1/10,000s
Gain	Auto/Manual
White Balance	Auto, Indoor, Outdoor, One push, Manual,
Exposure	Auto, Manual, Shutter Priority, Iris Priority
S/N Radio	Above 50dB
<b>Full view camera</b>	
Image Sensor	1/2.8" Exmor CMOS
Effective Pixel	2.14mp
White Balance	Auto
Exposure	Auto
Field of View	Horizontal:72°;Vertical:40°
Lens	3.7mm
<b>PTZ</b>	
Pan/Tilt Angle Range	Pan: -170° - +170° ; Tilt: -30° - +90°
Pan/Tilt Speed	Pan: 0.1° - +120°/s ; Tilt: 0.1° - +90°/s
Preset Number	256
<b>Network</b>	
Max,Image Size	1920x1080 @ 60fps
Frame Rate	1080P60, 1080P50,1080P30,1080P25, 1080I60,1080I50,720P60,720P50
Video Compression	H.264/H.265
Video Output	HD-SDI(2 Channels)
Network Protocol	ONVIF / HTTP / RTSP / RTMP / TCP / UDP
Dual Stream	Support
Simultaneous Users	up to 10 users
Ethernet	RJ45 connector, 100M
Comm.Interface	RS-485, RS-232
Protocol	VISCA and PELCO-D
<b>General</b>	
Power Supply	DC12V
Power Consumption	<20W
Working Temp	0°C - +40°C
Storage Temp	-20°C - +60°C
Dimension	226mm x 212mm x 163mm
Weight	1.96KG
Color	Grey

**\*\*\* Product specification are subject to change without notice \*\*\***

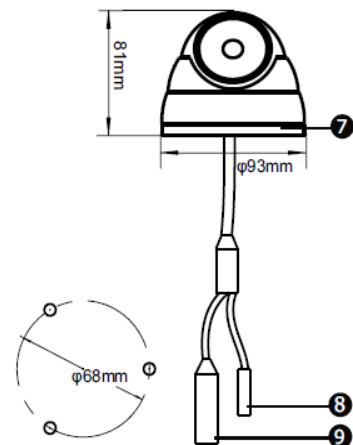
## Specification

<b>Model No.</b>	<b>BLS-200</b>
<b>Image Sensor</b>	1/3" Exmor CMOS
<b>Effective Pixel</b>	4.00MP
<b>Min.Illumination</b>	1Lux @ F2.0
<b>S/N Radio</b>	Above 50dB
<b>Gain</b>	Auto
<b>Shutter Speed</b>	1/30 - 1/10,000s
<b>White Balance</b>	Auto
<b>Focal</b>	2.4mm
<b>View Angle</b>	90°(Wide), 50°(Tele)
<b>Aperture</b>	F2.0
<b>Kbps</b>	32Kbps - 8Mbps
<b>Video Frame Rate</b>	720p30, 1080p30
<b>Ethernet</b>	10-100M, Support POE
<b>Power Supply</b>	DC12V, POE
<b>Power Consumption</b>	Below 5W
<b>Working Temp.</b>	0°C - +40°C
<b>Humidity</b>	Below 90%(No Condensation)
<b>Dimension(L x W x H)</b>	φ93mm x 81mm
<b>Weight</b>	0.33kg

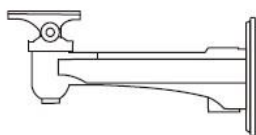
## Dimensional Drawing



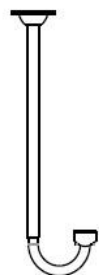
- ① Audio
- ② Network
- ③ HD-SDI 1
- ④ HD-SDI 2
- ⑤ RS-485 / RS-232
- ⑥ DC12V
- ⑦ Regulating ring
- ⑧ DC12V
- ⑨ POE



## Accessories



Wall Bracket



Ceiling Mount

\*\*\* Product specification are subject to change without notice \*\*\*