

# VC-A70H Lumens First 4K Ultra HD PTZ Camera

**Lumens**<sup>™</sup>  
Brilliance by Design

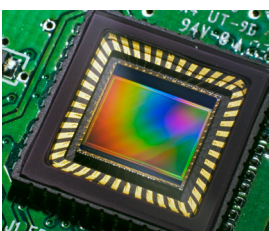
The Lumens™ VC-A70H 4K Ultra HD PTZ camera is equipped with a professional 1/2.3-type progressive scan “Exmor R” CMOS sensor with 9 megapixels output resolution that delivers a superb clear and vivid live image. The superior 12x optical zoom lens, excellent white balance, and exposure mode delivers a clear image even in low light or the extreme contrast of brightness and darkness of a conference room. The camera covers a wide shooting angle and utilizes a highly efficient DC motor servo controller to achieve high-speed, quiet and precise positioning movements with smooth PTZ operations. The VC-A70H HD PTZ camera has HDBaseT interfaces allowing Ultra HD resolution and long distance transmission up to 70 meters which carries power, video, and control through one CAT5e/6 cable. Lumens VC-A70H 4K Ultra HD PTZ camera is applicable for lecture capture, videoconferencing and broadcasting systems.

## Key Features

- 4K UHD 30fps and 1080P 60fps video signal output format
- 12x optical zoom with 2x clear Image zoom, total 24x zoom
- 74 degrees Horizontal Field of View (HFOV)
- HDBaseT interface carries power, video and control through one CAT5e/6 cable
- HDMI and HDBaseT image output simultaneously
- Built-in Tally light
- Maximum horizontal/vertical speed of rotation: 300 degrees/sec
- Wide Pan/Tilt/Zoom mechanism:  
Horizontal viewing angle: -170° to +170°  
Tilting angle up to 90°, and down to -30°
- Up to 128 user defined preset modes to allow ease of use in all environments
- Clear images without blur even while being operated
- High speed, stable, quiet, and effortless positioning ensure the highest quality images



## More Details



### Image Quality

Equipped with a professional image sensor with 4K UHD 30 fps and Full HD 1080p 60fps output resolution providing high color reproduction, high definition, and a crystal-clear image. The VC-A70H has a professional 12x optical zoom lens that provides image details without any distortions.



### Advanced Image Processing

The advanced AF/AE/AWB algorithm and circuit design ensures a pristine image during the pan, tilt, zoom & capture function.

### Support HDBaseT Interface

The VC-A70H 4K Ultra HD PTZ camera has a HDBaseT interface. The camera only needs one CAT5e/6 cable for its power supply, control and video output. This feature not only simplifies the installation process, it also reduces system integration costs.



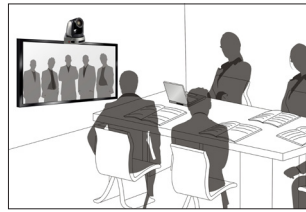
### HDMI and HDBaseT Image Output Simultaneously

The VC-A70H supports HDMI and HDBaseT interface allowing two simultaneous image outputs with the best possible image quality.



## Built-in Tally Light

The VC-A70H built-in tally light. The LED lights turn on when the camera is in operation. This is an essential function for a broadcast studio or any applications with more than two PTZ cameras.



## Panoramic Viewing Angle

The VC-A70H has a panoramic 74° horizontal field of view that helps users achieve a wider viewing area.

## Product Specifications

<b>Sensor</b>	1/2.3" 9MP CMOS	<b>Aperture</b>	F1.8~F2.0
<b>Video Output</b>	3840 x 2160p 29.97 / 25 fps 1080p 59.94 / 50 fps 1080i 59.94 / 50 fps 720p 59.94 / 50 fps NTSC / PAL	<b>Tally Light</b>	Yes
<b>Optical Zoom</b>	12x	<b>PoE</b>	Yes(IEEE802.3af)
<b>Clear Image Zoom</b>	1.67x(4K:20x) 2.0x(1080P:24x)	<b>Camera Control Interface</b>	RS232C/RS422
<b>Digital Zoom</b>	12x	<b>Camera Control Protocol</b>	VISCA, PELCO D
<b>Video Output Interface</b>	HDBaseT, HDMI	<b>Minimum Illumination</b>	3.0 lux (F1.8, 50 IRE, 30 fps)
<b>Horizontal Viewing Angle</b>	74°	<b>Minimum Object Distance</b>	T:150 cm W:1 cm
<b>Panning Angle</b>	-170° ~ +170°	<b>Gain Control</b>	Auto/Manual
<b>Tilting Angle</b>	-30° ~ +90°	<b>White Balance</b>	Auto, Indoor, Outdoor, One-Push, Manual
<b>Preset Positions</b>	128	<b>Exposure Control</b>	Auto, Manual
<b>Panning Speed</b>	300°/sec	<b>Focus System</b>	Auto, Manual
<b>Tilting Speed</b>	300°/sec	<b>WDR</b>	Yes
<b>Video S/N Ratio</b>	> 50dB	<b>Image Flip</b>	Yes
<b>Shutter Speed</b>	1/1~1/10,000	<b>3D NR</b>	Yes
<b>Focal Length</b>	3.9mm~46.8mm	<b>Dimensions</b>	174 x 170.2 x 186.8 mm (6.9" x 6.7" x 7.4")
		<b>Weight</b>	2.0 Kg

## I/O CONNECTIONS

