

VC-A20P

High Definition PTZ IP Camera

Lumens[™]
Brilliance by Design

The Lumens[™] VC-A20P HD Pan/Tilt/Zoom (PTZ) camera is equipped with a professional 1/2.8 inch image sensor with Full HD 1080p output resolution at high dynamic image 60 frames per second. The superior 10x optical zoom lens, excellent white balance, and exposure mode deliver a clear image even in low light or the extreme contrast of brightness and darkness in a conference room. The camera covers a wide shooting angle and achieves high-speed, quiet, and precise positioning with smooth PTZ operations. The VC-A20P supports different interfaces like Ethernet, DVI-I, and C-Video. These connections not only allow for simultaneous image outputs, they also result in the best possible image quality and is compatible with all video equipment. There are up to 128 preset settings and stable remote controlling for effective and efficient presentations. The VC-A20P is ideally suited for lecture recording, videoconferencing, and security surveillance systems, thereby delivering a continuous, clear, and vivid live image without any distortions.

Key Features

- Full HD 1080p high definition signal output format with a high frame rate of 60 fps
- 10x optical zoom
- Ethernet, DVI-I, and C-Video image outputs synchronously
- Maximum horizontal/vertical speed of rotation: 120 degrees/second
- Horizontal viewing angle: 56.5°
- Audio Input Support
- Built-in image flip and mirror functions
- Up to 128 user-defined preset modes to allow for ease of use in all environments



More Details

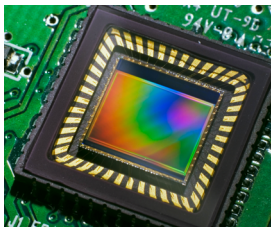


Image Quality

The VC-A20P is equipped with a professional 1/2.8 inch image sensor with Full HD 1080p output resolution. The sensor provides high color reproduction, high-definition signals, and crystal-clear image quality.



Wide Range Pan/Tilt/Zoom Action

The VC-A20P has a wide shooting area (pan angle from -170° to +170° ; tilt angle from -30° to +90°), as well as quiet, fast, and precise positioning movements.



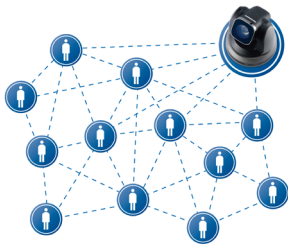
Multiple Signal Interface Formats

The VC-A20P is able to switch video output formats from NTSC/PAL, SD, to Full HD for compatibility in various display devices.



Ethernet Interface

The VC-A20P supports a H.264 video compression format that can reduce the bandwidth for transmitting video. This technology decreases hard disk space when recording. In addition, these cameras have the ability to distribute streaming medias while supporting ONVIF protocol.



128 Position Presets

The VC-A20P has up to 128 preset settings for pan, tilt, zoom, focus, exposure, and white balance modes for more effective and efficient video recording.



RS-232/422 Remote Control

The camera's settings and PTZ control functions can be performed remotely at any location and at high communication speeds via the RS-232/422 interface.



Audio Input Support

The VC-A20P supports stereo audio input and AAC encoding transmission through the Internet to extend the distance of the audio device. Through this transmission, sound quality is enhanced and installation costs are reduced.

Product Specifications

Sensor	1/2.8" 2 MP CMOS
Video Output	1080p 60 / 59.94 / 50 / 30 / 29.97 fps, 1080i 50 / 60 fps, 720p 60 / 50 fps, NTSC / PAL
Optical Zoom	10x
Panning Angle	-170° ~ +170°
Tilting Angle	-30° ~ +90°
Preset Positions	128
Video Output(HD) Interface	DVI-I, Ethernet
Video Output(SD) Interface	CVBS (C-Video)
Network Interface	ONVIF / RTSP Streaming / RTMP Streaming
Camera Control Interface/Protocol	RS-232 / RS-422 / Ethernet
Video S/N Ratio	> 50dB
Shutter Speed	1/1 ~ 1/10,000 sec
Focal Length	f = 5 ~ 50 mm

Horizontal Viewing Angle	56.5°
Aperture	F1.8 ~ 3.0
Minimum Illumination	5 lux
Minimum Object Distance	100(Wide) ~ 1000(Tele) mm
Gain Control	Auto, manual
White Balance	Auto, indoor, outdoor, one-push, manual
Exposure Control	Auto, manual
Focus System	Auto, manual
Image Flip	Yes
Audio Input	Yes
Weight	4.0 lbs (1.8 kg)
Dimension (W x D x H)	6.9" x 6.8" x 7.2" (174 x 173.8 x 182.7 mm)

I/O CONNECTIONS

